

MIC. # 9704 (RAB. 2428)

HEILPERIN, YA'AKOV  
SHELOMOH.

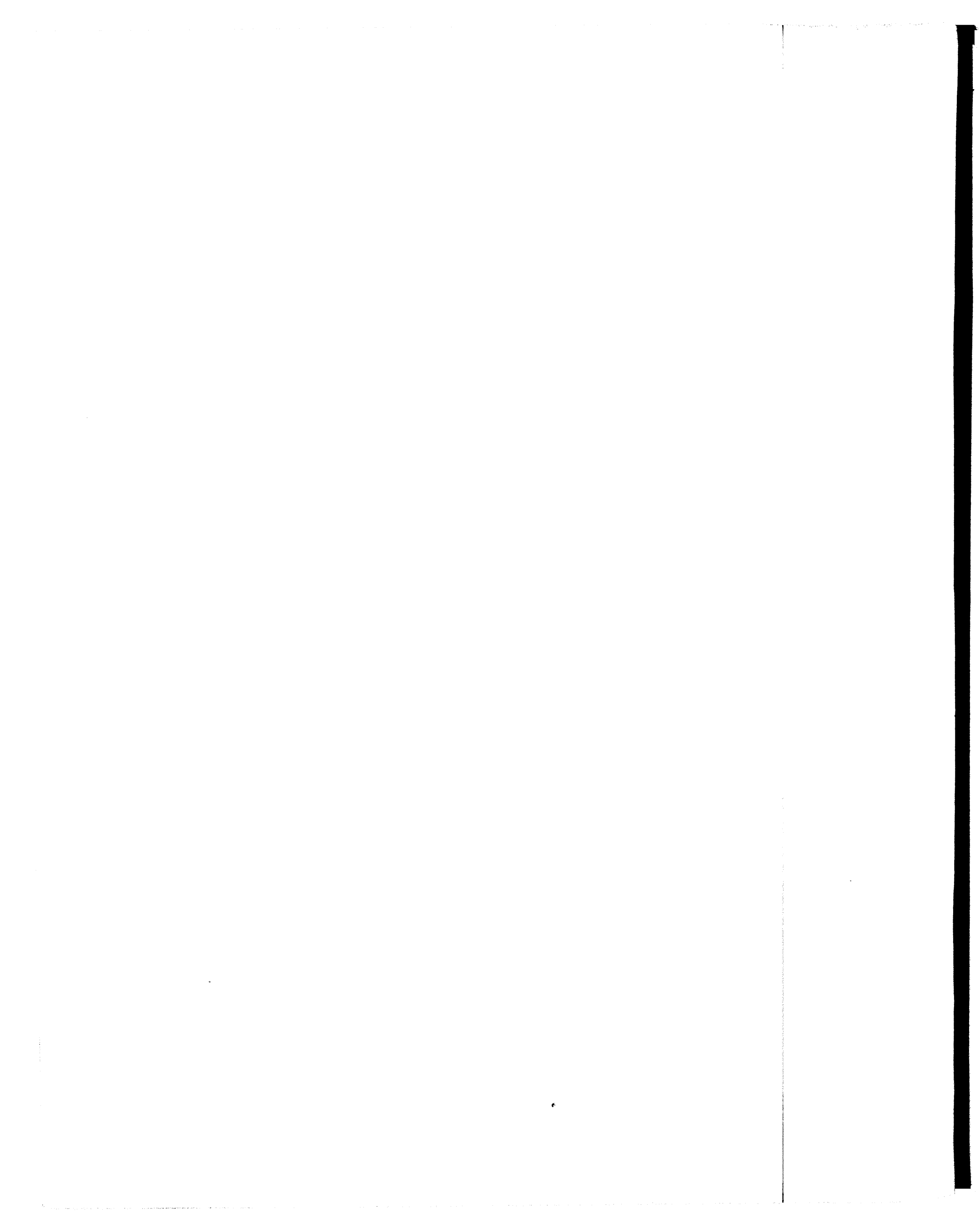
היילפרין, יעקב שלמה.

SIDRE BE-RESHIT.

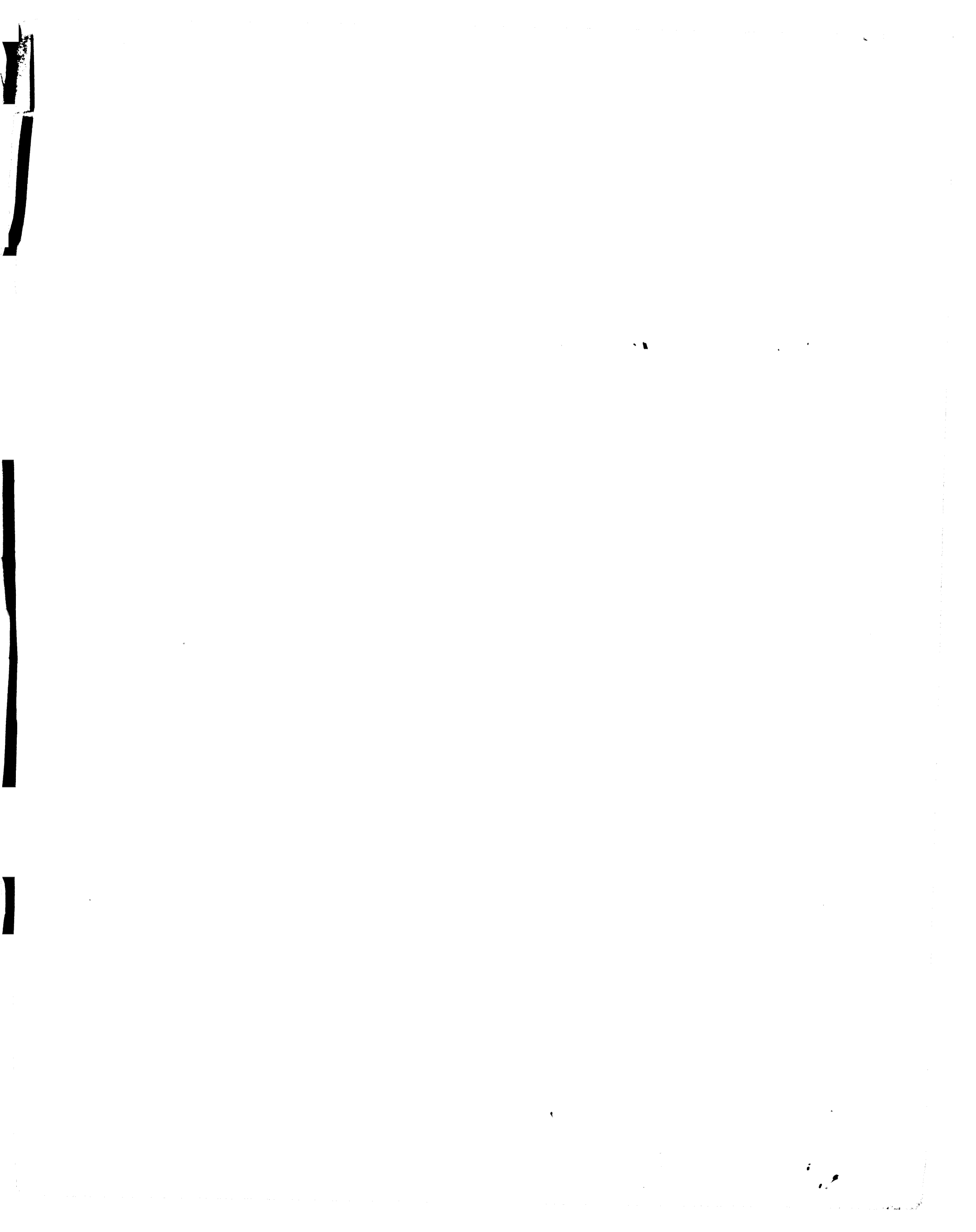
סדרי בראשית.

[1846-1859] : דונא'וב ופרמישלן

ASHKENAZIC SCRIPT



Handwritten text in a cursive script, likely a historical document or manuscript. The text is densely packed and spans the entire page, with some lines appearing to be crossed out or heavily scribbled over. The script is difficult to decipher due to its cursive nature and the high contrast of the image.



Handwritten text in Hebrew script, likely a manuscript or a collection of letters. The text is dense and covers most of the page, with some lines appearing to be part of a list or a series of short paragraphs. The handwriting is cursive and somewhat difficult to decipher in some places due to the ink and the style.

Handwritten text in a cursive script, likely a historical document or manuscript. The text is densely packed and spans the entire page, with some words circled in ink. The script is difficult to decipher due to its cursive nature and the high contrast of the image. The text appears to be a continuous narrative or a list of entries, possibly related to a legal or administrative record. There are several large, bold letters or symbols that may serve as section markers or initials. The overall appearance is that of an old, handwritten document.

Handwritten text in a cursive script, likely a historical document or manuscript. The text is densely packed and spans the entire page, showing signs of age and wear. The script is highly stylized and difficult to decipher, but appears to be a form of early modern European handwriting. The document is heavily stained and has a dark, irregular border, suggesting it is a scan of an old, possibly damaged, page.

100 21 20

Handwritten text in a cursive script, likely a historical document or manuscript. The text is dense and spans the entire page, with some lines appearing to be part of a list or account. The script is highly stylized and difficult to decipher without specialized knowledge of the language and dialect used.





Handwritten text in a cursive script, likely a letter or document. The text is heavily obscured by a dark, irregular shadow on the left side of the page, making it difficult to read. The visible portions of the text are written in a dense, flowing hand. There are several lines of text, with some words appearing to be crossed out or heavily faded. The overall appearance is that of an old, possibly damaged, manuscript or document.





Handwritten text in a cursive script, likely a historical document or letter. The text is written in a dark ink on a light-colored paper. The script is dense and fills most of the page. The text is written in a cursive script, likely a historical document or letter. The text is written in a dark ink on a light-colored paper. The script is dense and fills most of the page. The text is written in a cursive script, likely a historical document or letter. The text is written in a dark ink on a light-colored paper. The script is dense and fills most of the page.











Handwritten text in a cursive script, likely a historical document or manuscript. The text is densely packed and spans the entire page, with some lines appearing to be crossed out or heavily corrected. The script is characteristic of early modern European handwriting.

Vertical text on the right margin, possibly a page number or a reference note.

Vertical text on the left margin, possibly a page number or a reference note.

*(Vertical text on the left margin, likely bleed-through from the reverse side of the page)*

*(Main body of handwritten text in Hebrew, written in a cursive script, covering the right side of the page)*

התעוררות וחינוך הילדים

Main body of handwritten text, densely packed and written in a cursive style, covering most of the page.

Vertical handwritten text on the right margin, possibly a commentary or continuation.

Handwritten text in a cursive script, likely a historical document or manuscript. The text is written in a dark ink on a light-colored paper. The script is dense and fills most of the page. There are several large, dark, irregular shapes scattered throughout the text, which appear to be ink blots or damage to the original document. The text is written in a cursive style, with many loops and flourishes. The overall appearance is that of an old, possibly damaged, handwritten document.

Handwritten text at the top of the page, including the word "אשר" (asher) and "אשר" (asher).

Handwritten text in the upper middle section, featuring the word "אשר" (asher) and "אשר" (asher).

Handwritten text in the middle section, including the word "אשר" (asher) and "אשר" (asher).

Handwritten text in the lower middle section, featuring the word "אשר" (asher) and "אשר" (asher).

Handwritten text in the lower section, including the word "אשר" (asher) and "אשר" (asher).

Handwritten text in the lower section, featuring the word "אשר" (asher) and "אשר" (asher).

Handwritten text in the lower section, including the word "אשר" (asher) and "אשר" (asher).

Handwritten text in the lower section, featuring the word "אשר" (asher) and "אשר" (asher).

Handwritten text at the bottom of the page, including the word "אשר" (asher) and "אשר" (asher).

*[The page contains several lines of handwritten text in a cursive script, which is largely illegible due to extreme fading and heavy noise. The text appears to be organized into paragraphs or sections, possibly separated by small circular markers or initials.]*

Handwritten text in a cursive script, likely a letter or document. The text is dense and spans most of the page. It appears to be written in a historical or regional dialect. The ink is dark, and the paper shows signs of age and wear.

Handwritten text at the bottom left, possibly a signature or a note.

Handwritten text at the bottom right, possibly a signature or a note, enclosed in a large, irregular scribble.





Handwritten text in a cursive script, likely a historical document or manuscript. The text is written in a dark ink on a light-colored paper. The script is dense and fills most of the page. The text is written in a cursive script, likely a historical document or manuscript. The text is written in a dark ink on a light-colored paper. The script is dense and fills most of the page. The text is written in a cursive script, likely a historical document or manuscript. The text is written in a dark ink on a light-colored paper. The script is dense and fills most of the page.





The first part of the document is a list of names and titles, including "The Hon. Mr. Justice" and "The Hon. Mr. Chief Justice". The text is written in a cursive hand and is somewhat difficult to read due to the ink and the angle of the writing. The names are listed in a column, with some names appearing to be followed by their respective titles or positions.

The second part of the document appears to be a list of names, possibly a roster or a list of participants. The names are written in a similar cursive hand and are arranged in a column. Some of the names are partially obscured by the ink or the way the page is folded.

The third part of the document contains a list of names and titles, similar to the first part. The text is written in a cursive hand and is somewhat difficult to read. The names are listed in a column, with some names appearing to be followed by their respective titles or positions.

The fourth part of the document contains a list of names and titles, similar to the first part. The text is written in a cursive hand and is somewhat difficult to read. The names are listed in a column, with some names appearing to be followed by their respective titles or positions.





Handwritten text in a cursive script, likely a historical document or letter. The text is written in a dark ink on a light-colored paper. The script is dense and fills most of the page. There are some faint markings and possibly a signature or stamp at the bottom right corner, but they are difficult to discern due to the high contrast and graininess of the image. The text appears to be in a historical or religious context, possibly related to a legal or administrative document.



אין ארבע עשר  
אין ארבע עשר  
אין ארבע עשר

אין ארבע עשר  
אין ארבע עשר  
אין ארבע עשר

אין ארבע עשר  
אין ארבע עשר  
אין ארבע עשר

אין ארבע עשר  
אין ארבע עשר  
אין ארבע עשר

אין ארבע עשר  
אין ארבע עשר  
אין ארבע עשר

אין ארבע עשר  
אין ארבע עשר  
אין ארבע עשר

אין ארבע עשר  
אין ארבע עשר  
אין ארבע עשר

[Large blacked-out redaction covering the left side of the page]

*[The image contains a page of handwritten text, likely in a cursive script, which is extremely faint and difficult to decipher. The text is arranged in several lines across the page. There are several dark circular marks, possibly ink blots or punch holes, scattered throughout the document. The overall quality is poor, with high contrast and significant noise, making the individual characters and words nearly illegible.]*



הנה אלהים אמת ויהוה אחד  
אלהים אחד יהוה אחד  
אלהים אחד יהוה אחד  
אלהים אחד יהוה אחד  
אלהים אחד יהוה אחד  
אלהים אחד יהוה אחד  
אלהים אחד יהוה אחד  
אלהים אחד יהוה אחד  
אלהים אחד יהוה אחד  
אלהים אחד יהוה אחד





Handwritten text in a cursive script, likely a historical document or manuscript. The text is densely packed and spans the entire page, showing signs of age and wear. The script is highly stylized and difficult to decipher without specialized knowledge of the language and dialect. The document appears to be a record of events or a personal account, given the nature of the handwriting and the lack of formal structure. The text is written in a dark ink on a light-colored, possibly parchment or aged paper, with some fading and staining visible throughout. The overall appearance is that of an antique manuscript or a historical record.

Handwritten text in a cursive script, likely a historical document or manuscript. The text is densely packed and spans the entire page, with some lines appearing to be part of a list or a series of entries. The script is highly stylized and difficult to decipher without specialized knowledge of the language and dialect used. The document appears to be a record of transactions, possibly related to land or property, given the frequent use of terms like "land" and "property" in some of the legible fragments. The text is written in a dark ink on a light-colored paper, and the overall appearance is that of an old, well-used manuscript.

Handwritten text in a cursive script, possibly Latin or a Romance language. The text is densely packed and spans the width of the page. It appears to be a continuous paragraph or a list of entries. The script is highly stylized and difficult to decipher in many places due to the density and slant of the letters. There are several lines that are heavily obscured by dark ink blotches or damage to the original document. The text seems to follow a structured format, possibly with headings or sub-sections, though they are illegible.





Handwritten text in a cursive script, likely a historical document or manuscript. The text is written in a dark ink on a light-colored background. The script is dense and fills most of the page. There are several large, dark, irregular shapes scattered across the page, which appear to be ink blots or damage to the original document. The text is written in a cursive style, characteristic of the early modern period. The words are difficult to decipher due to the cursive and the ink blots. The overall appearance is that of an old, possibly damaged, handwritten document.



Handwritten text in a cursive script, likely a historical document or manuscript. The text is densely packed and spans the entire page, with some lines appearing to be part of a list or numbered entries. The script is highly stylized and difficult to decipher without specialized knowledge of the language and dialect. The document appears to be a record of events, possibly related to a military or administrative context, given the use of terms like "army" and "commander" in some of the legible fragments. The text is written in a dark ink on a light-colored paper, and the overall appearance is that of an old, well-used manuscript.



כבוד אלוהים. ויחברו אליו כל המלאכים והקדושים ואלה הם שמותיהם: אלהים, אב, בן, קדוש, רב, מלך, יוצר, וכו'. ואלה הם שמותיהם אשר נקראו בהם בשמים: אלהים, אב, בן, קדוש, רב, מלך, יוצר, וכו'. ואלה הם שמותיהם אשר נקראו בהם בארץ: אלהים, אב, בן, קדוש, רב, מלך, יוצר, וכו'. ואלה הם שמותיהם אשר נקראו בהם בכל מקום: אלהים, אב, בן, קדוש, רב, מלך, יוצר, וכו'.

ועתה ידעו כל אלה אשר שמעו את דברי אלהים יקראו בשמותיהם בראיית הלב. ואלה שמותיהם: אלהים, אב, בן, קדוש, רב, מלך, יוצר, וכו'. ואלה שמותיהם אשר נקראו בהם בשמים: אלהים, אב, בן, קדוש, רב, מלך, יוצר, וכו'. ואלה שמותיהם אשר נקראו בהם בארץ: אלהים, אב, בן, קדוש, רב, מלך, יוצר, וכו'. ואלה שמותיהם אשר נקראו בהם בכל מקום: אלהים, אב, בן, קדוש, רב, מלך, יוצר, וכו'.

וזה הוא סוד השמות אשר נכתבו בשמים. ואלה שמותיהם: אלהים, אב, בן, קדוש, רב, מלך, יוצר, וכו'. ואלה שמותיהם אשר נקראו בהם בשמים: אלהים, אב, בן, קדוש, רב, מלך, יוצר, וכו'. ואלה שמותיהם אשר נקראו בהם בארץ: אלהים, אב, בן, קדוש, רב, מלך, יוצר, וכו'. ואלה שמותיהם אשר נקראו בהם בכל מקום: אלהים, אב, בן, קדוש, רב, מלך, יוצר, וכו'.



Handwritten marginal text along the left edge.

Main body of handwritten text, appearing to be a religious or philosophical treatise, written in a cursive style.





Handwritten text in a cursive script, likely a historical document or manuscript. The text is written in a dark ink on a light background and is arranged in approximately 25 lines, sloping downwards from left to right. The script is dense and characteristic of early modern European handwriting. The document appears to be a formal record or a legal document, given the use of capital letters and the structured nature of the lines. The text is mostly illegible due to the high contrast and grain of the scan, but some words and phrases are discernible, such as 'Actum', 'In', 'Anno', and 'Mense'. The document is framed by a dark border on the right and bottom sides.

Handwritten text in a cursive script, likely a historical document or manuscript. The text is written in a dark ink on a light-colored paper. The script is dense and fills most of the page. There are several large, dark, irregular shapes that appear to be redactions or heavily inked-out areas, obscuring parts of the text. The text is written in a cursive style, characteristic of 17th or 18th-century handwriting. The overall appearance is that of an old, possibly damaged, document.



39

181

Handwritten text in a cursive script, likely a historical record or account. The text is written in a dark ink on aged paper and is organized into several paragraphs. The script is highly fluid and characteristic of 17th-century handwriting. The text is densely packed and covers most of the page. There are some faint markings and what appears to be a signature or set of initials at the bottom left. The overall appearance is that of a well-preserved but somewhat faded historical document.

Handwritten text in a cursive script, likely a historical document or manuscript. The text is written in a dark ink on a light-colored paper. The script is dense and fills most of the page. There are several large, dark, irregular shapes that appear to be redactions or damage to the original document, obscuring parts of the text. The text is written in a cursive style, characteristic of the early modern period. The overall appearance is that of an old, possibly damaged, manuscript page.

על-התורה... חסד ורחמים...  
בזה... ואלה הן המצוות...  
ועתה... ואלו חוקי השפטים...  
והענין... ואלו חוקי העדות...  
ועתה... ואלו חוקי הפלע...  
והענין... ואלו חוקי הפלע...  
ועתה... ואלו חוקי הפלע...  
והענין... ואלו חוקי הפלע...  
ועתה... ואלו חוקי הפלע...  
והענין... ואלו חוקי הפלע...

Handwritten text in a cursive script, likely a historical document or letter. The text is written in a dark ink on a light-colored paper. The script is dense and fills most of the page. There are several large, decorative initials or flourishes interspersed throughout the text, particularly on the left side. The handwriting is somewhat slanted and appears to be from the 17th or 18th century. The text is mostly illegible due to the high contrast and some fading, but some words and phrases are discernible, such as "I have", "I am", "I will", "I do", "I can", "I must", "I should", "I would", "I could", "I might", "I shall", "I may", "I must", "I should", "I would", "I could", "I might", "I shall", "I may".





Handwritten text in a cursive script, likely a historical document or manuscript. The text is densely packed and spans the entire page, with some lines appearing to be crossed out or heavily scribbled over. The ink is dark, and the paper shows signs of age and wear.

Handwritten text in a dense, cursive script, likely Yiddish, covering the entire page. The text is written diagonally from top-left to bottom-right. The ink is dark and the handwriting is highly stylized and difficult to decipher. There are several large, decorative initial letters (possibly 'פ', 'ק', 'ו') that serve as section markers. The paper appears aged and slightly stained, with some ink bleed-through or smudges visible.

Handwritten text in a cursive script, likely a historical document or manuscript. The text is densely packed and spans the entire page, with some lines appearing to be part of a list or a series of entries. The script is highly stylized and difficult to decipher due to its cursive nature and the high contrast of the image. The text is written in a dark ink on a light background, with some areas showing signs of fading or wear. The overall appearance is that of an old, handwritten document.

Handwritten text in a cursive script, likely a historical document or manuscript. The text is written in a dark ink on a light-colored paper. The script is dense and fills most of the page. There are several large, decorative initial letters, possibly 'S' or 'S', at the beginning of sections. The text appears to be a list or a series of entries, with some words and phrases repeated. The overall appearance is that of an old, handwritten record or account.

Handwritten text in a cursive script, likely a historical document or manuscript. The text is densely packed and spans the entire page, with some lines appearing to be crossed out or heavily faded. The script is characteristic of early modern European handwriting, possibly from a region like the Netherlands or Germany. The document appears to be a letter or a formal record, given the use of capital letters and the structured nature of the lines. The ink is dark, and the paper shows signs of age and wear.

Handwritten text in a cursive script, likely a historical document or manuscript. The text is written in a dark ink on a light-colored paper. The script is dense and fills most of the page. There are several large, decorative initial letters or symbols at the beginning of lines, possibly indicating the start of a new section or paragraph. The text is written in a style characteristic of the late 16th or early 17th century. The document is heavily obscured by a large, dark, irregular shape on the left side, which appears to be a shadow or a large mark. The right side of the page is mostly blank, with a vertical line running down the center-right. There are some small, dark spots and smudges scattered across the page, particularly on the right side.

Handwritten text in a cursive script, likely a historical document or manuscript. The text is densely packed and covers most of the page. It appears to be written in a language that could be Hebrew or a related Semitic language, given the characters and the style of the script. The text is written in a cursive style, with many loops and flourishes. There are several large, decorative initials or symbols interspersed throughout the text. The overall appearance is that of an old, possibly religious or legal, document.

Vertical text on the right margin, possibly a date or a reference number, written in a similar cursive script.



Handwritten text in a cursive script, likely a historical document or manuscript. The text is written in a dark ink on a light-colored background. The script is dense and fills most of the page. There are several large, dark, irregular shapes on the right side of the page, which appear to be redactions or damage to the original document. The text is written in a cursive style, characteristic of the early modern period. The words are difficult to decipher due to the cursive and the high contrast of the image. The text appears to be a continuous paragraph or a series of lines of text. There are some larger, more prominent words or phrases that stand out, but they are not clearly legible. The overall appearance is that of an old, possibly damaged, manuscript page.

Handwritten text in a cursive script, likely a historical document or manuscript. The text is written in a dark ink on a light-colored paper. The handwriting is dense and fills most of the page. The text is written in a cursive script, likely a historical document or manuscript. The text is written in a dark ink on a light-colored paper. The handwriting is dense and fills most of the page. The text is written in a cursive script, likely a historical document or manuscript. The text is written in a dark ink on a light-colored paper. The handwriting is dense and fills most of the page.



Handwritten text in a cursive script, likely a historical document or manuscript. The text is densely packed and spans the entire page, with some lines appearing to be crossed out or heavily scribbled over. The script is difficult to decipher due to its cursive nature and the high contrast of the image. The text is written in a dark ink on a light background, with some areas showing signs of wear or damage.

Handwritten text in a cursive script, possibly Hebrew or Arabic, covering the entire page. The text is dense and includes several large, stylized characters or symbols. The page is heavily marked with black ink, including large blotches and horizontal lines that obscure parts of the original text. The overall appearance is that of a heavily redacted or heavily scribbled-over document.

*[Faint, illegible handwritten text, likely bleed-through from the reverse side of the page. The text is written in a cursive script and is mostly obscured by noise and artifacts.]*

*[A second section of faint, illegible handwritten text, also appearing to be bleed-through. It contains several lines of cursive script that are difficult to decipher due to the image quality.]*



*[A dense page of handwritten text in a historical script, likely Hebrew or Yiddish, written from right to left. The text is highly cursive and contains several large, dark ink blotches or corrections. The handwriting is consistent throughout, suggesting a single scribe. The page appears to be a manuscript or a personal letter.]*



Handwritten text in a cursive script, likely a historical document or letter. The text is dense and spans across the top half of the page. It appears to be written in a historical form of a language, possibly Hebrew or a related Semitic language, given the context of the document's appearance. The ink is dark and the handwriting is somewhat slanted and compact.

Handwritten text in a cursive script, continuing from the top section. This section is also dense and spans across the middle half of the page. The script is consistent with the top section, suggesting it is part of the same document. The text is written in a similar dark ink and cursive style.





Handwritten text in a cursive script, likely Hebrew, running vertically down the left margin of the page. The text is partially obscured by the dark binding edge of the book.

Handwritten text in a cursive script, possibly Yiddish or Hebrew. The text is written in a dense, flowing style across multiple lines. A large, dark, irregular shape obscures a significant portion of the text in the center and left side of the page. A vertical line is drawn on the right side of the page, separating the main body of text from a narrow column of text on the far right edge. The text appears to be a personal letter or a diary entry, with various words and phrases written in a highly stylized and somewhat difficult-to-read hand. The overall appearance is that of an old, handwritten document.

Handwritten text in a cursive script, likely a historical document or manuscript. The text is densely packed and spans the entire page, with some lines appearing to be crossed out or heavily faded. The script is difficult to decipher due to its cursive nature and the high contrast of the image.

Handwritten text in a cursive script, likely a historical document or manuscript. The text is written in a dark ink on a light-colored paper, showing signs of age and wear. The script is dense and fills most of the page, with some lines appearing to be part of a list or a series of entries. The text is written in a cursive script, likely a historical document or manuscript. The text is written in a dark ink on a light-colored paper, showing signs of age and wear. The script is dense and fills most of the page, with some lines appearing to be part of a list or a series of entries. The text is written in a cursive script, likely a historical document or manuscript. The text is written in a dark ink on a light-colored paper, showing signs of age and wear. The script is dense and fills most of the page, with some lines appearing to be part of a list or a series of entries.

Handwritten text in a cursive script, likely a historical document or manuscript. The text is written in a dark ink on a light-colored paper. The script is dense and fills most of the page. There are several large, dark, irregular shapes that appear to be ink blots or damage to the original document, obscuring some of the text. The text is written in a cursive style, characteristic of the early modern period. The overall appearance is that of an aged and somewhat damaged manuscript.



Handwritten text in a cursive script, likely a historical document or letter. The text is written in a dark ink on a light-colored paper. The script is dense and fills most of the page. The text is written in a cursive script, likely a historical document or letter. The text is written in a dark ink on a light-colored paper. The script is dense and fills most of the page. The text is written in a cursive script, likely a historical document or letter. The text is written in a dark ink on a light-colored paper. The script is dense and fills most of the page.

Handwritten text in a cursive script, likely a historical document or manuscript. The text is densely packed and spans most of the page. It contains various words and phrases, some of which are circled or underlined, possibly indicating specific points of interest or corrections. The script is somewhat difficult to decipher due to its cursive nature and the high contrast of the image.

Vertical handwritten text on the right margin, possibly a date or a reference number. It appears to be written in a similar cursive script as the main body of text.

Small handwritten mark or signature at the bottom center of the page.

Handwritten text in a cursive script, likely Hebrew or Arabic, starting with a large initial letter. The text is written on aged paper with a vertical line on the right side. The script is dense and somewhat illegible due to fading and the quality of the scan.



Handwritten text in a cursive script, likely a historical document or manuscript. The text is written in a dark ink on a light-colored paper. The script is dense and fills most of the page. There are several large, dark, irregular shapes scattered throughout the text, which appear to be ink blots or damage to the original document. The text is written in a cursive style, with many loops and flourishes. The overall appearance is that of an old, possibly damaged, handwritten document.

Handwritten text in a cursive script, likely a historical document or letter. The text is heavily obscured by dark ink blotches and is difficult to decipher. The script appears to be a form of early modern European cursive, possibly from the 16th or 17th century. The document is written on aged, yellowed paper with significant staining and ink bleed-through from the reverse side.



Handwritten text in a cursive script, likely a historical document or letter. The text is written in a dark ink on a light-colored paper. The script is dense and fills most of the page. There are several large, dark ink blotches or stains, particularly on the right side and bottom, which obscure some of the text. The text appears to be in a historical language, possibly Hebrew or a related Semitic language, given the context of the image. The handwriting is fluid and characteristic of a personal or official correspondence from a past era.

Vertical handwritten text on the right margin, possibly a date or a reference note.

Vertical handwritten text on the right margin, possibly a signature or a note.



Handwritten text in a cursive script, possibly a religious or philosophical manuscript. The text is densely packed and covers the majority of the page. A vertical line runs down the right side of the page, separating the main body of text from a narrow column of text on the right edge. The ink is dark and the paper appears aged or stained.

Handwritten text in a cursive script, likely a letter or a manuscript page, written in a language that appears to be Hebrew or a related Semitic language. The text is densely packed and covers most of the page. The script is highly stylized and difficult to read due to the high contrast of the black and white image. The text is arranged in several lines, following the general flow of the page. There are some larger characters and symbols interspersed throughout the text, which may be specific to the language or a dialect. The overall appearance is that of an old, handwritten document.





91

67 101

11 12

67 101

11 12

11 12

11 12

11 12

11 12

11 12

11 12

11 12

11 12

11 12



Handwritten text in a cursive script, likely a historical document or manuscript. The text is densely packed and covers most of the page. It appears to be written in a language that may be a form of Hebrew or a related Semitic language, given the characters and the use of some recognizable words like "אשר" (asher) and "ו" (vav). The script is highly stylized and difficult to decipher in many places due to the cursive nature and some ink bleed-through or fading. There are several large, dark ink blotches or smudges scattered throughout the page, particularly in the lower-left and central areas, which obscure some of the text. The overall appearance is that of an old, well-used manuscript page.

Handwritten text in a cursive script, likely a historical document or letter. The text is dense and spans most of the page, with some lines appearing to be crossed out or heavily scribbled over. The ink is dark and the paper shows signs of age and wear.

Handwritten text in a cursive script, continuing from the upper section. This section appears to be a separate paragraph or a distinct part of the document, also written in a similar cursive hand. The text is less dense than the upper section and ends with a small circular mark at the bottom left.



Handwritten text, possibly a list or journal entries, covering the majority of the page. The text is dense and difficult to decipher due to the high contrast of the scan.

Handwritten text on the right side of the page, separated from the main body of text by a vertical line.

*[The page contains dense, handwritten text in a cursive script, likely a historical document or manuscript. The text is extremely faded and difficult to decipher. It appears to be organized into several paragraphs, with some lines starting with capital letters. There are also some circular symbols or initials interspersed within the text. The overall appearance is that of an old, worn document.]*

Handwritten text in a cursive script, likely a historical document or manuscript. The text is densely packed and spans the entire page, with some lines appearing to be part of a list or numbered entries. The script is highly stylized and difficult to decipher. There are several large, dark, irregular marks scattered throughout the page, which appear to be ink blots or damage to the original document. The overall appearance is that of an old, heavily used manuscript.

*[The page contains dense, handwritten text in a cursive script, likely a historical document or manuscript. The text is extremely faded and difficult to decipher, but appears to be organized into several paragraphs. Some words are clearly legible, such as "1777" and "1778".]*



Handwritten text in a cursive script, likely a historical document or letter. The text is dense and spans the upper portion of the page.

Handwritten text in a cursive script, continuing from the upper portion. The text is dense and spans the middle portion of the page.

Handwritten text in a cursive script, likely a signature or a concluding section of the document. The text is dense and spans the lower portion of the page.

*[The page contains dense, handwritten text in a cursive script, likely a historical document or manuscript. The text is extremely faded and difficult to decipher, but appears to be organized into several paragraphs. There are some circular symbols or initials interspersed throughout the writing. The overall appearance is that of an old, worn document.]*

*[The page contains dense, handwritten text in a cursive script, likely a historical document or manuscript. The text is extremely faded and difficult to decipher, but appears to be organized into several paragraphs. A prominent horizontal line is visible across the middle of the page, possibly indicating a section break or a correction. The handwriting is slanted and compact, characteristic of early modern cursive.]*





Handwritten text in a cursive script, likely a historical document or manuscript. The text is densely packed and spans the entire page, with some lines appearing to be crossed out or heavily faded. The script is difficult to decipher due to its cursive nature and the high contrast of the image. The text appears to be organized into several paragraphs, with some lines starting with capital letters or decorative flourishes. The overall appearance is that of an old, possibly Latin or Germanic, manuscript page.

The text is a dense, handwritten manuscript in a cursive script, likely from the 17th or 18th century. It is written in a dark ink on aged, slightly yellowed paper. The script is highly stylized and difficult to decipher without specialized knowledge of the language and dialect. The text is organized into several paragraphs, with some lines starting with large, decorative initial letters. The overall appearance is that of a personal or official record, possibly a diary or a set of accounts.

First section of handwritten text, appearing as a list or series of entries, possibly starting with a circled number.

Second section of handwritten text, continuing the list or entries, with some lines appearing more densely written.

Third section of handwritten text, located at the bottom of the page, possibly concluding the list or entries.

Handwritten text in a cursive script, likely a historical document or manuscript. The text is densely packed and spans across several lines, with some words appearing to be in a different script or dialect than others.

Additional handwritten text at the bottom of the page, continuing the narrative or list from the upper section. The script remains consistent with the upper portion of the document.

Handwritten text in a cursive script, likely a historical document or manuscript. The text is densely packed and spans the entire page, with some lines appearing to be part of a list or account. The script is highly stylized and difficult to decipher without specialized knowledge of the language and dialect used.







Handwritten text in a cursive script, likely a historical document or manuscript. The text is densely packed and covers most of the page. It appears to be a letter or a formal document, given the use of some capital letters and the overall structure. The ink is dark, and the paper shows signs of age and wear.

Handwritten text at the bottom of the page, possibly a signature or a concluding statement. It is written in the same cursive script as the main body of text. The lines are more spaced out, and there is a clear end to the writing.

Handwritten text in a cursive script, likely a historical document or manuscript. The text is densely packed and spans the entire page, with some lines appearing to be crossed out or heavily obscured by dark ink. The script is characteristic of early modern European handwriting, possibly from a region like the Netherlands or Germany. The document appears to be a formal record or a set of accounts, given the structured nature of the entries and the use of various symbols and abbreviations. The text is written in a dark ink on a light-colored paper, and the overall appearance is that of an aged and somewhat damaged manuscript.

Handwritten text in Hebrew script, appearing to be a letter or document. The text is dense and covers most of the page, with some lines being heavily obscured by dark ink or damage. The script is cursive and characteristic of historical Hebrew documents. The text is written from right to left, following the traditional orientation of Hebrew writing. There are several lines that are completely blacked out, likely due to redaction or damage to the original document. The overall appearance is that of an aged and possibly damaged manuscript.

Handwritten text in a cursive script, likely a historical document or manuscript. The text is densely packed and spans most of the page. It appears to be written in a language with a complex alphabet, possibly a form of Hebrew or a related Semitic script. The ink is dark, and the paper shows signs of age and wear, including some staining and a vertical crease on the left side. The text is arranged in approximately 25 horizontal lines, with some lines being more prominent than others. The overall appearance is that of an old, well-used document.

Handwritten text in a cursive script, likely Hebrew or Yiddish, appearing as bleed-through from the reverse side of the page. The text is dense and covers the upper portion of the document.

Main body of handwritten text in a cursive script, likely Hebrew or Yiddish. The text is arranged in several lines, filling most of the page. There are some dark, irregular shapes and markings interspersed within the text, possibly due to ink bleed-through or damage to the original document.



Handwritten text in a cursive script, likely a historical document or manuscript. The text is written in a dark ink on a light background and is arranged in approximately 25 horizontal lines. The script is highly stylized and difficult to decipher. The document appears to be a page from a book or a set of accounts, with some lines starting with what might be initials or specific names. The overall appearance is that of an old, possibly handwritten, record or letter.

*[The page contains dense, handwritten text in a cursive script, likely a historical document or manuscript. The text is written in dark ink on aged paper and is oriented vertically. Due to the high contrast and graininess of the scan, the specific words and phrases are largely illegible. The handwriting is consistent throughout, suggesting a single scribe. The text appears to be organized into several paragraphs or sections, with some lines starting with capital letters. There are some dark smudges and ink blotches, particularly near the top and bottom edges of the page.]*







Handwritten text in a cursive script, likely a historical document or manuscript. The text is written in a dark ink on a light background and is arranged in approximately 15 lines. The script is dense and difficult to decipher due to its cursive nature and the high contrast of the image. The text appears to be a formal document, possibly a letter or a record, given the structured layout and the use of some larger, possibly decorative or significant, characters. The overall appearance is that of an aged, handwritten document.





Handwritten text in a cursive script, likely a historical document or manuscript. The text is written in a dark ink on a light-colored paper. The script is dense and fills most of the page. There are several large, dark, irregular blotches or redactions scattered throughout the text, particularly in the lower half of the page. The handwriting is consistent and appears to be from a single scribe. The overall appearance is that of an old, possibly damaged, document.

Handwritten text in a cursive script, likely a historical document or manuscript. The text is written in a dark ink on a light-colored paper. The script is dense and fills most of the page. There are several large, dark, irregular shapes that appear to be redactions or heavily inked-out sections, particularly at the bottom left and bottom right corners. The text is written in a style characteristic of 18th or 19th-century handwriting. The words are difficult to decipher due to the cursive nature and the high contrast of the image. The overall appearance is that of an old, possibly damaged or partially obscured, document.





*[Extremely faint and illegible handwritten text, likely bleed-through from the reverse side of the page. The text is written in a cursive script and covers most of the page area.]*

Handwritten text in Hebrew script, appearing to be a letter or document. The text is dense and covers most of the page, with some lines being heavily obscured by dark ink or damage. The script is cursive and characteristic of historical Hebrew documents. The text is written from right to left, following the traditional direction of Hebrew writing.

מקום שבו נמצא ה"ק

Handwritten text in a cursive script, likely a historical document or manuscript. The text is written in a dark ink on a light-colored paper. The script is dense and fills most of the page. There are some large, stylized initials or symbols interspersed throughout the text. The overall appearance is that of an old, handwritten document.

Handwritten text in a cursive script, likely a letter or document. The text is heavily obscured by noise and artifacts, making it largely illegible. It appears to be written in a historical or regional dialect.

Handwritten text in a cursive script, continuing from the upper section. The text is heavily obscured by noise and artifacts, making it largely illegible. It appears to be written in a historical or regional dialect.

Handwritten text in a cursive script, likely a historical document or manuscript. The text is densely packed and spans the entire page, with some lines appearing to be crossed out or heavily obscured by ink. The script is difficult to decipher due to its cursive nature and the high contrast of the image. The text appears to be organized into several paragraphs, with some lines starting with large, decorative initials. The overall appearance is that of an old, possibly Latin or Germanic, manuscript page.

The first part of the manuscript is written in a cursive hand, starting with a large initial 'P'. The text is dense and covers most of the page. It appears to be a historical or scientific record, possibly related to the study of plants or minerals, given the context of the adjacent page.

The second section of the manuscript continues the text from the first section. It features several lines of cursive script, with some words appearing to be in a different language or dialect. The handwriting is consistent with the first section, suggesting a single author or scribe.

The final section of the manuscript is located in the bottom right corner. It contains a few lines of text, which may be a conclusion or a separate note. The handwriting is more legible here, possibly due to the larger size of the text or the better preservation of that section.

no

Handwritten text in Hebrew script, likely a religious or philosophical treatise. The text is dense and covers the top portion of the page.

Second section of handwritten text in Hebrew script, continuing the narrative or argument. It is written in a cursive style typical of historical manuscripts.

Third section of handwritten text in Hebrew script, occupying the bottom portion of the page. The text appears to be a continuation of the same work.

Handwritten text in a cursive script, likely a historical document or letter. The text is dense and covers the upper portion of the page.

Handwritten text in a cursive script, continuing from the upper portion. The text is dense and covers the lower portion of the page.





Handwritten text in a cursive script, likely a historical document or letter. The text is densely packed and spans the entire page, with some lines appearing to be crossed out or heavily scribbled over. The ink is dark, and the paper shows signs of age and wear.

Handwritten text at the top of the page, possibly a header or introductory paragraph.

Main body of handwritten text, appearing to be a list or series of entries, possibly related to a ledger or account book.

Main body of handwritten text, appearing to be a letter or document in a cursive script.

Handwritten text in a cursive script, likely a historical document or letter. The text is written in a dark ink on a light-colored paper, showing signs of age and wear. The script is dense and fills most of the page, with some lines appearing to be crossed out or heavily scribbled over. The overall appearance is that of an old, possibly illegible manuscript.

Main body of handwritten text, consisting of multiple lines of cursive script. The text is dense and appears to be a continuous narrative or record. The ink is dark, and the handwriting is somewhat slanted and compact.

The first thing I noticed when I stepped  
 out of the car was a heavy, damp  
 air that clung to my skin. The  
 streets were slick with rain, and the  
 buildings loomed over me, their windows  
 reflecting the grey sky. I had never  
 before, and it felt like I had entered  
 a new world. The rain was not just  
 falling; it was falling on me, washing  
 away the dust of the road and the  
 heat of the sun. I shivered, not from  
 cold, but from the sudden change in  
 atmosphere. The city was alive, even  
 in the rain. The cars honked, the  
 streetlights glowed, and the sound of  
 water hitting pavement was a constant  
 rhythm. I took a deep breath, the  
 moisture filling my lungs. It was  
 strange, but I felt a sense of  
 relief. The rain was here, and I was  
 here. I walked down the sidewalk,  
 my shoes splashing in the puddles.  
 The world was wet, and I was part  
 of it.





*[The page contains dense, handwritten text in a cursive script, likely a historical document or manuscript. The text is written in dark ink on aged paper and is oriented vertically. The handwriting is highly stylized and difficult to decipher. There are several large, decorative initial letters at the beginning of lines, possibly marking the start of new sections or paragraphs. The overall appearance is that of an old, handwritten record or account.]*

*[The page contains dense, handwritten text in a cursive script, likely a historical document or manuscript. The text is extremely faded and difficult to decipher, appearing as dark, overlapping strokes against a light background. The handwriting is slanted and fills most of the page area.]*

*[The page contains dense, handwritten text in a cursive script, which is largely illegible due to extreme contrast and noise. The text is organized into several columns, with a vertical line separating the rightmost column from the rest of the page. The handwriting is consistent throughout, suggesting a single scribe. The overall appearance is that of a heavily degraded or high-contrast scan of a handwritten document.]*

*[The page contains dense, handwritten text in a cursive script, likely a historical document or manuscript. The text is extremely faded and difficult to decipher. It appears to be organized into several paragraphs, with some lines being underlined. The handwriting is consistent throughout, suggesting a single scribe. The overall appearance is that of an old, worn document.]*

Handwritten text in a cursive script, possibly a historical document or manuscript. The text is written in a dark ink on a light-colored paper. The script is dense and fills most of the page. There are some large, bold letters and some smaller, more decorative flourishes. The text is arranged in several lines, with some lines starting with a large initial letter. The overall appearance is that of a handwritten letter or a page from a book.

Handwritten text in a cursive script, likely a historical document or manuscript. The text is densely packed and spans the entire page, with some lines appearing to be crossed out or heavily obscured by dark ink. The script is difficult to decipher due to its cursive nature and the high contrast of the image.

Handwritten text in a cursive script, likely Hebrew or Yiddish, covering the entire page. The text is written in a dense, flowing style and appears to be a letter or a document. The script is highly stylized and difficult to read in detail. The page is numbered '12' in the top right corner. There are some dark, irregular marks on the left side, possibly from a binding or a stamp.

Handwritten text in a cursive script, likely a historical document or manuscript. The text is dense and spans the entire page, with some lines appearing to be crossed out or heavily scribbled over. The script is difficult to decipher due to its cursive nature and the high contrast of the image.



~~Handwritten text, crossed out with a thick black line.~~

Handwritten text in a cursive script, likely Hebrew or Yiddish. The text is dense and appears to be a letter or a document. It contains several lines of writing, some of which are crossed out or heavily obscured by ink blotches and a thick black line. The script is highly stylized and difficult to decipher. The text is arranged in a roughly rectangular block at the top of the page, with some lines extending further down. The overall appearance is that of a heavily used and possibly damaged manuscript or document.

Handwritten text in a cursive script, likely a historical document or letter. The text is written in a dark ink on a light-colored background. The script is dense and fills most of the page. There are several large, dark, irregular shapes on the right side of the page, which appear to be ink blots or damage to the original document. The text is written in a cursive style, characteristic of the 17th or 18th century. The words are difficult to decipher due to the cursive and the ink quality. The overall appearance is that of an old, possibly damaged, manuscript or letter.

4

