

MIC. # 9642 (RAB. 2393)

DERUSHIM VE-HIDUSHIM.

דרושים וחדושים.

PRESSBURG-OWEN:

[CA. 1761-1775]

ASHKENAZIC SCRIPT

These images are from the collection of the Library of the Jewish Theological Seminary (JTS). JTS holds the copyrights to these images. The images may be downloaded or printed by individuals for personal use only, but may not be quoted or reproduced in any publication without the prior permission of JTS.

הועתק והוכנס לאינטרנט
www.hebrewbooks.org
ע"י חיים תש"ע



0 4948

R 2393

MIC 9642

Handwritten text in Hebrew script, appearing to be a list or index of books. The text is arranged in several columns and includes various titles and descriptions, such as "ספר חובות", "ספר אבות", and "ספר אבות דרובי עקיבא". The handwriting is dense and somewhat difficult to read due to the high contrast and some ink bleed-through.

Handwritten text in a cursive script, likely a historical document or manuscript. The text is arranged in two columns, with a vertical line separating them. The script is dense and difficult to decipher due to its cursive nature and the high contrast of the image. The document appears to be a page from a book or a set of accounts, possibly containing names, dates, and descriptions of events or transactions. The text is written in a dark ink on a light background, and the overall appearance is that of an aged, handwritten record.

Handwritten text in a cursive script, likely a historical document or manuscript. The text is densely packed and spans the entire page, with some lines appearing to be organized into columns or sections. The script is highly stylized and difficult to decipher without specialized knowledge of the language and dialect. The document appears to be a record of events, possibly related to a military or administrative context, given the use of terms like "army" and "commander" in some of the legible fragments.

Handwritten text in a cursive script, likely a historical document or manuscript. The text is densely packed and spans the entire page, with some lines appearing to be organized into columns or sections. The script is highly stylized and difficult to decipher without specialized knowledge of the language and dialect. The document appears to be a page from a larger book or a collection of letters, given the presence of a vertical margin on the right side.

Handwritten text at the top of the page, possibly a title or header.

Handwritten text in the upper section of the page, appearing to be a list or series of notes.

Handwritten text in the middle section of the page, continuing the list or notes.

Handwritten text in the lower-middle section of the page.

Handwritten text in the lower section of the page.

Handwritten text in the lower section of the page.

Handwritten text in the lower section of the page.

Handwritten text at the bottom of the page, possibly a signature or footer.

ענין המעשה והוא ארבעה עשר
ענין המעשה והוא ארבעה עשר
ענין המעשה והוא ארבעה עשר
ענין המעשה והוא ארבעה עשר

ענין המעשה והוא ארבעה עשר
ענין המעשה והוא ארבעה עשר

ענין המעשה והוא ארבעה עשר
ענין המעשה והוא ארבעה עשר

ענין המעשה והוא ארבעה עשר
ענין המעשה והוא ארבעה עשר

ענין המעשה והוא ארבעה עשר
ענין המעשה והוא ארבעה עשר

ענין המעשה והוא ארבעה עשר
ענין המעשה והוא ארבעה עשר

ענין המעשה והוא ארבעה עשר
ענין המעשה והוא ארבעה עשר

ענין המעשה והוא ארבעה עשר
ענין המעשה והוא ארבעה עשר

ענין המעשה והוא ארבעה עשר
ענין המעשה והוא ארבעה עשר

ענין המעשה והוא ארבעה עשר
ענין המעשה והוא ארבעה עשר

ענין המעשה והוא ארבעה עשר
ענין המעשה והוא ארבעה עשר

Handwritten text in a cursive script, likely a historical document or manuscript. The text is densely packed and spans the entire page, though it is significantly obscured by heavy noise and artifacts from the scanning process. The script appears to be a form of early modern European cursive, possibly from the 16th or 17th century. The document is framed by a simple border.

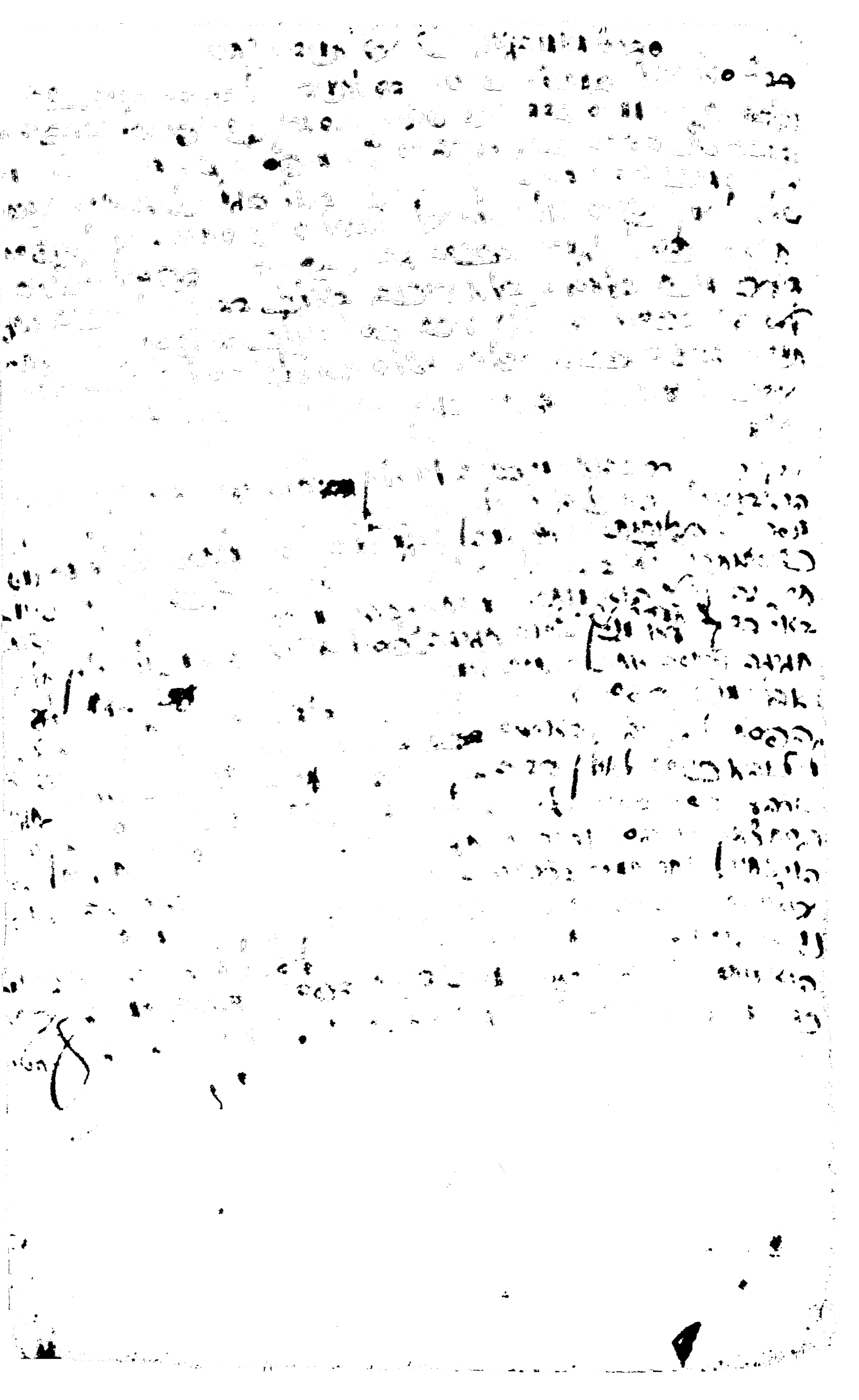
Handwritten text in a cursive script, likely a historical document or manuscript. The text is densely packed and spans the entire page, with some lines appearing to be organized into columns or sections. The script is highly stylized and difficult to decipher without specialized knowledge of the language and dialect used.

Handwritten text in a cursive script, likely a historical document or manuscript. The text is densely packed and spans the entire page. It appears to be written in a language that may be a form of Hebrew or a related Semitic language, given the use of characters like 'א', 'ב', 'ג', 'ד', 'ה', 'ו', 'ז', 'ח', 'ט', 'י', 'כ', 'ל', 'מ', 'נ', 'ס', 'ע', 'פ', 'צ', 'ק', 'ר', 'ש', 'ת'. The script is highly stylized and difficult to decipher without specialized knowledge. The document is framed by a simple border.

Handwritten text in Hebrew script, appearing to be a dense collection of notes or a manuscript page. The text is written in a cursive style and covers most of the page. The content is difficult to decipher due to the handwriting and the high contrast of the scan. The text is organized into several paragraphs, with some lines starting with large, bold letters. The overall appearance is that of a personal or working manuscript.

Handwritten text in a cursive script, likely a historical document or manuscript. The text is densely packed and spans the entire page, with a vertical line running down the right side. The script is highly stylized and difficult to decipher, but appears to be a form of historical or religious writing.

Handwritten text in a cursive script, likely a historical document or manuscript. The text is densely packed and spans the entire page, with a vertical line separating the left and right columns. The script is highly stylized and difficult to decipher, but appears to be a form of early modern European handwriting. The text is written in dark ink on aged, slightly yellowed paper. The overall appearance is that of a historical record or a personal letter.



Handwritten text in a cursive script, likely a religious or legal document. The text is densely packed and covers the entire page. It appears to be a form of Hebrew or Yiddish, possibly a prayer or a legal decree. The script is highly stylized and difficult to read without specialized knowledge of the language and its historical context. The text is written in black ink on aged, slightly yellowed paper. There are some faint markings and what might be a signature or seal at the bottom, but they are not clearly legible. The overall appearance is that of an old, handwritten manuscript.

Handwritten text in a cursive script, likely a historical document or manuscript. The text is densely packed and spans the entire page, with some lines appearing to be part of a list or a series of entries. The script is highly stylized and difficult to decipher without specialized knowledge of the language and dialect used. The document appears to be a record of transactions, possibly related to land or property, given the frequent use of terms like "land" and "property" in some of the legible fragments. The text is written in a dark ink on a light-colored paper, and the overall appearance is that of an old, well-used manuscript.

Handwritten text in a cursive script, likely a historical document or manuscript. The text is densely packed and spans the entire page, showing signs of age and wear. The script is highly stylized and difficult to decipher without specialized knowledge of the language and dialect. The document appears to be a single page of a larger work, with some lines being more legible than others due to fading and ink bleed-through.

[The page contains dense, illegible handwritten text, likely bleed-through from the reverse side of the paper. The text is written in a cursive style and covers most of the page area.]

Handwritten text in a cursive script, likely a historical document or manuscript. The text is densely packed and spans the entire page, with a vertical line running down the right side. The script is highly stylized and difficult to decipher, but appears to be a form of early modern European handwriting. The text is written in dark ink on a light-colored background.

Handwritten text at the top of the page, possibly a title or header, including the number '24' on the left margin.

Main body of handwritten text, appearing to be a list or a series of entries, written in a cursive script. The text is dense and fills most of the page.

אשר יצא אל בני ישראל ויאמר להם
כעת אתם באים אל הארץ אשר אנכי
אומר לכם ויאמר להם ויאמר להם
ואמר להם ויאמר להם ויאמר להם
ואמר להם ויאמר להם ויאמר להם

עם אברהם אבינו ויעשרנו
ועשרנו ויעשרנו ויעשרנו ויעשרנו
ועשרנו ויעשרנו ויעשרנו ויעשרנו
ועשרנו ויעשרנו ויעשרנו ויעשרנו
ועשרנו ויעשרנו ויעשרנו ויעשרנו

ועשרנו ויעשרנו ויעשרנו ויעשרנו
ועשרנו ויעשרנו ויעשרנו ויעשרנו
ועשרנו ויעשרנו ויעשרנו ויעשרנו
ועשרנו ויעשרנו ויעשרנו ויעשרנו
ועשרנו ויעשרנו ויעשרנו ויעשרנו

ועשרנו ויעשרנו ויעשרנו ויעשרנו
ועשרנו ויעשרנו ויעשרנו ויעשרנו
ועשרנו ויעשרנו ויעשרנו ויעשרנו
ועשרנו ויעשרנו ויעשרנו ויעשרנו
ועשרנו ויעשרנו ויעשרנו ויעשרנו

ועשרנו ויעשרנו ויעשרנו ויעשרנו
ועשרנו ויעשרנו ויעשרנו ויעשרנו
ועשרנו ויעשרנו ויעשרנו ויעשרנו
ועשרנו ויעשרנו ויעשרנו ויעשרנו
ועשרנו ויעשרנו ויעשרנו ויעשרנו

ועשרנו ויעשרנו ויעשרנו ויעשרנו
ועשרנו ויעשרנו ויעשרנו ויעשרנו
ועשרנו ויעשרנו ויעשרנו ויעשרנו
ועשרנו ויעשרנו ויעשרנו ויעשרנו
ועשרנו ויעשרנו ויעשרנו ויעשרנו

Handwritten text in a cursive script, likely a historical document or manuscript. The text is densely packed and spans the entire page, with some lines appearing to be part of a list or a series of entries. The script is highly stylized and difficult to decipher without specialized knowledge of the language and dialect used. The document appears to be a record of some kind, possibly related to land, trade, or legal matters, given the nature of the words and the structure of the entries. The text is written in a dark ink on a light-colored paper, and the overall appearance is that of an old, well-used manuscript.

Handwritten text in a cursive script, likely a historical document or manuscript. The text is densely packed and spans the entire page, with a vertical line running down the right side. The script is highly stylized and difficult to decipher, but appears to be a form of early modern European handwriting. The text is written in black ink on a light-colored background.

Handwritten text in a cursive script, likely a historical document or manuscript. The text is densely packed and covers the entire page. The script is highly stylized and difficult to decipher without specialized knowledge of the language or dialect. The document appears to be a single page of a larger work, with a vertical line running down the right side, possibly indicating a margin or a page fold. The ink is dark, and the paper shows signs of age and wear.

Handwritten text in a cursive script, likely a historical document or manuscript. The text is densely packed and spans the entire page, with some lines appearing to be organized into columns or sections. The script is highly stylized and difficult to decipher without specialized knowledge of the language or dialect used.

10K... [Illegible handwritten text in a cursive script, likely a ledger or account book, with multiple columns and rows of entries.]

Handwritten text in a cursive script, likely a historical document or manuscript. The text is densely packed and spans the entire page. A large, dark, circular mark is present near the bottom center of the page, possibly a stamp or a large initial. The script is difficult to decipher due to its cursive nature and the high contrast of the image.

Handwritten text in a cursive script, possibly a historical document or manuscript. The text is written in a dark ink on a light-colored paper. The script is dense and appears to be a form of shorthand or a specific dialect. The text is arranged in several lines, with some words appearing to be abbreviations or initials. The overall appearance is that of a personal or official record from a past era.

Handwritten text at the top of the page, possibly a title or header.

Handwritten text in the top right corner, possibly a date or page number.

Main body of handwritten text, appearing to be a list or series of entries, possibly bleed-through from the reverse side of the page.

[The page contains dense, handwritten text in a cursive script, which is largely illegible due to the high contrast and noise of the scan. The text is organized into several columns, with a prominent vertical line separating the rightmost column from the rest of the page. Some words and symbols are visible, such as '100', '1000', and various mathematical or scientific notations.]

Handwritten text in a cursive script, likely a historical document or manuscript. The text is dense and spans the upper portion of the page.

Handwritten text in a cursive script, likely a historical document or manuscript. This section appears to be a continuation or a separate entry, located in the lower portion of the page.

Handwritten text in a cursive script, likely a historical document or manuscript. The text is densely packed and spans the entire page, with some lines appearing to be crossed out or heavily faded. The script is difficult to decipher due to its cursive nature and the high contrast of the image.

Handwritten text in a cursive script, likely a historical document or manuscript. The text is densely packed and spans the entire page, with a vertical line separating the left and right columns. The script is highly stylized and difficult to decipher.

Handwritten text in a cursive script, likely a historical document or manuscript. The text is densely packed and spans the entire page. The script is highly stylized and difficult to decipher. There are several lines of text that appear to be headings or sub-sections, possibly written in a different hand or ink. The overall appearance is that of an old, handwritten document.

Handwritten text in a cursive script, likely a historical document or manuscript. The text is densely packed and spans the entire page, with some lines appearing to be crossed out or heavily scribbled over. The script is difficult to decipher due to its cursive nature and the presence of many loops and flourishes. The document appears to be written on aged paper, with some darkening and wear visible at the bottom left corner.

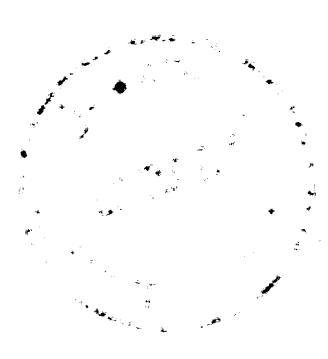
Handwritten text in a cursive script, possibly a ledger or account book. The page is divided into two columns by a vertical line. The left column contains numbers and some illegible text, while the right column contains more text and numbers. The handwriting is dense and somewhat faded. The page is numbered '12' at the bottom left.

12
13
14
15
16
17
18
19
20
21
22
23
24
25
26
27
28
29
30
31
32
33
34
35
36
37
38
39
40
41
42
43
44
45
46
47
48
49
50
51
52
53
54
55
56
57
58
59
60
61
62
63
64
65
66
67
68
69
70
71
72
73
74
75
76
77
78
79
80
81
82
83
84
85
86
87
88
89
90
91
92
93
94
95
96
97
98
99
100

12

Handwritten text in a cursive script, possibly a ledger or account book. The page is divided into columns by vertical lines. The text is extremely faint and difficult to decipher, but appears to contain numerical entries and descriptive notes. A vertical line runs down the right side of the page, and another line is visible on the left side. The overall appearance is that of an old, worn document with significant ink bleed-through or fading.

Handwritten text in a cursive script, likely a historical document or letter, located at the top of the page. The text is dense and spans across the upper portion of the document.



Handwritten text at the top of the page, possibly a title or header, including the word "Licht".

Handwritten text block 1

Handwritten text block 2

Handwritten text block 3

Handwritten text block 4

Handwritten text block 5

Handwritten text block 6

Handwritten text block 7

Handwritten text block 8

Handwritten text block 9

Handwritten text on the right side of the page, including the word "Licht".

Handwritten text at the top of the page, possibly a title or header.

Handwritten text line.

Handwritten text line.

Handwritten text line.

Handwritten text line.

Handwritten text line.

Handwritten text line.

Handwritten text line.

Handwritten text line.

Handwritten text line.

Handwritten text line.

Handwritten text line.

Handwritten text line.

Handwritten text line.

Handwritten text line.

Handwritten text line.

Handwritten text line.

Handwritten text line.

Handwritten text at the bottom of the page.